



SABAH FORESTRY DEPARTMENT

Standard Operating Procedure Sexual Harassment

Document No: SFD/SOP - 02

Approved By:

(DATUK MASHOR MOHD JAINI)
Chief Conservator of Forests

*This is a "CONTROLLED" document.
Routine distribution is restricted to the approved
distribution in Sabah Forestry Department.*

Effective Date: 17 March 2020

Issue: 00

This is copy one for Master File

For Internal Use Only. No Duplication Allowed



SABAH FORESTRY DEPARTMENT

Document No.:
Title:
Issue:
Effective Date:

SFD/SOP - 02
Sexual Harassment
00
17 March 2020

TABLE OF CONTENT

1.0	BACKGROUND AND OBJECTIVES	1
2.0	SCOPE	1
3.0	DEFINITION	1
4.0	BEHAVIOR, CONDITION OR ACTION THAT CAN LEADS TO SEXUAL HARASSMENT	1
	4.1 Physical Harassment.....	1
	4.2 Verbal Harassment.....	1
	4.3 Non-Verbal Harassment.....	2
	4.4 Visual Harassment.....	2
	4.5 Psychological Harassment.....	2
5.0	ACTION CAN BE TAKEN BY THE COMPLAINANT	2
	5.1 Lodging Report.....	2
6.0	WORKPLACE SEXUAL HARASSMENT PREVENTION PROGRAMME	2
8.0	REFERENCES	
	8.1 References to applicable laws.....	2
	8.2 References and Circulars.....	2
FIGURE		
	Figure 1: Flowchart showing lodging of complaints	3

LAMPIRAN

Lampran A: Borang Aduan Salah Laku Gangguan Seksual



SABAH FORESTRY DEPARTMENT

Document No.:
Title:
Issue:
Effective Date:

SFD/SOP - 02
Sexual Harassment
00
17 March 2020

1.0 BACKGROUND AND OBJECTIVES

Sexual harassment is an immoral act committed by one person against another. It is one of the prohibited behaviors in accordance to *Peraturan-Peraturan Pegawai Awam Negeri Sabah 2008, Bahagian V Kelakuan dan Tata tertib, Peraturan 209*. Therefore, the purpose of this procedure is to prevent and control any form of sexual harassment in Sabah Forest Department, so as to promote harmony, respect and integrity its officers.

2.0 SCOPE

The scope of this procedure is limited to the prevention (eliminating) and control of any form of sexual harassment in Sabah Forest Department. This procedure is important to ensure that matters related to sexual harassment are handled fairly, consistently, regulated and effective.

3.0 DEFINITION

Sexual harassment is behaviour, an act, action or statement that is sexual and unwanted which can negatively impact an employee's motivation and performance. It can take many forms, whether it is a persistent and offensive sexual act, an unwanted touch or the sending of sexually suggestive material at work that creates an uncomfortable atmosphere at work such as fear, hostility, self-pity, offended or hurt.

4.0 BEHAVIOR, CONDITION OR ACTION THAT CAN LEADS TO SEXUAL HARASSMENT

Sexual harassment covers a wide range of acts from mild assault to sexual abuse or assault. Harassment can come from victim's supervisor, a supervisor in another area, a colleague, or a client. The criminal or victim may be of any gender.

4.1 Physical Harassment

Physical harassment is a form of sexual physical contact such as approaching another person too close to the person, making the person feeling uncomfortable; holding; hugging; patting; rubbing; pinching; kissing; licking or groping until the Complainant feels offended, humiliated or threatened.

4.2 Verbal Harassment

This form of harassment can be seen in the use of obscene language through conversation, story-telling, joking, making sounds, critiquing, commenting, praising or asking sexually explicit questions about appearance, dress, behavior, body or sexual activity until a person feels offended, insulted or threatened.



SABAH FORESTRY DEPARTMENT

Document No.:
Title:
Issue:
Effective Date:

SFD/SOP - 02
Sexual Harassment
00
17 March 2020

4.3 Non-Verbal Harassment

This form of harassment is exhibited through the attitude or behavior of the Public Officers who express or describe sexual desires, such as ogling, flirting, staring, peeping, licking or using other sign language

4.4 Visual Harassment

The practice of sending note via print, social media or any application that allows the material to be transferred and displayed publicly that may cause the complainant to feel offended, insulted or threatened with sexual harassment.

4.5 Psychological Harassment

Attempts to sexually harass, push, urge, intimidate or persuade to satisfy a Public Officer's sexual desire whether by letter, telephone, e-mail or any form of communication device to the Complainant constitute emotional or mental stress on the Complainant that amounts to sexual harassment.

5.0 ACTION CAN BE TAKEN BY THE COMPLAINANT

5.1 Lodging complaint

The complainant may submit a complaint to the Chief Conservator of Forests. The complainant may also contact the Department's Personnel Management Services Division Officer for further information or advice. (Please refer to Figure 1)

6.0 WORKPLACE SEXUAL HARASSMENT PREVENTION PROGRAMS

6.1 Sexual harassment can be prevented from happening at work. Among the preventive programs that can be implemented are briefings to create awareness and explaining the process of handling sexual harassment cases at work.

7.0 REFERENCES

7.1 References to Applicable Laws:

- a. *Peraturan-peraturan Pegawai Awam Negeri Sabah 2008 (PPPNS 2008)*
- b. *Kod Etika Jabatan Perhutanan Sabah*

7.2 References and Circulars:

- a. *Pekeliling Perkhidmatan Bilangan 5 Tahun 2018, Garis Panduan Pengendalian Kes Gangguan Seksual di Tempat Kerja*

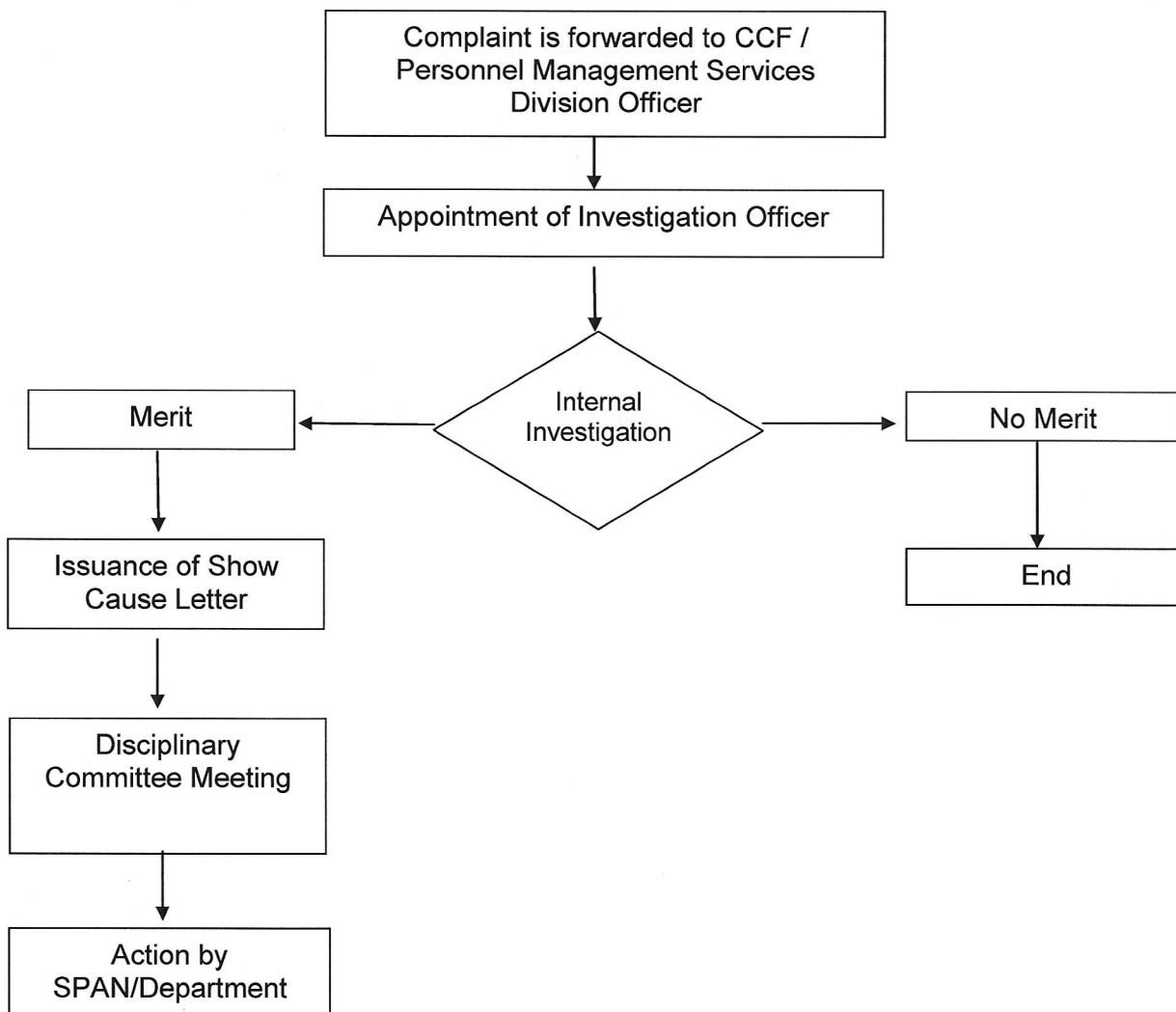


SABAH FORESTRY DEPARTMENT

Document No.:
Title:
Issue:
Effective Date:

SFD/SOP - 02
Sexual Harassment
00
17 March 2020

Figure 1: Flowchart showing lodging of complaints



BORANG ADUAN SALAH LAKU GANGGUAN SEKSUAL
(Borang ini diisi oleh Pegawai Penerima Aduan)Nama: No. Kad. Pengenalan: Jawatan: Alamat Pejabat: No. Telefon: E-Mel:

Maklumat Pegawai Yang Disyaki MenggangguNama: Alamat Pejabat: Jawatan:

Butir – Butir AduanTarikh Kejadian: Lokasi Kejadian: Masa Kejadian: Kekerapan Gangguan (Sehingga Tarikh Aduan): Sejarah Gangguan: Kali Pertama Kes Ulangan

Salah Laku Gangguan Seksual Yang Diperlakukan (Sila Jelaskan):

Kesan Yang Dialami:

Maklumat Tambahan (Jika Berkaitan)Nama Saksi Kejadian: Jawatan: No. Telefon: Nama Penerima Aduan: Tandatangan Penerima Aduan: Tarikh Aduan: